

# Coronys Version 19 Release Notes

---

27-Nov-2019 – Ver: 19.8.9

ETS - Command: StrBetweenSurrounds – Helps to parse JSON strings  
Fix close UDP port (port not released), Fix UDP data loss in high speed stream.

---

16-Sep-2019 – Ver: 19.6.79

ETS – Debugger (Internals) show task CPU usage  
Command: Task\_ActiveTasksList extended

28-Aug-2019 – Ver: 19.6.62

ETS – Support new number prefixes:  
0xffff – Hex Number  
0o777 – Octal Number  
0b10011 – Binary Number  
New Command: **LT\_SetStrFromLine**  
Show up to 6 Charts windows  
Show up to 6 Online View windows  
New commands for online Views: OLV\_  
WinShell command is extended  
Suite: copy/paste submit time parameters

---

27-Feb-2019 – Ver: 19.1.17

ETS – New Commands: **Task\_Timer, Task\_Settings**  
ETS – Task Limit event queue  
Extended Commands: **SysGetInternalValue**  
ESL\_Editor – Corrections

---

21-Jul-2019 – Ver: 19.5.50

ETS – New Commands: **OLV\_** Commands  
ETS – New view (On Line View) to show online data from any source. Display charts from OLV  
ETS – Up to 6 chart windows, Up to 6 OLV windows

22-Oct-2018 – Ver: 18.6.171

ETS – Add watchdog to script running. In case the script stops, it can restart the script automatically – see TC generate settings.

ETS – New Commands: **LT\_SetValuesFromLine, Task\_PrioritySet**

Extended Commands: **StopTimer, Run**

---

10-Aug-2018 – Ver: 18.4.107

ETS – New Commands: **IPCRestart, WinTaskIsRunning, RC\_Query**

Bugfix to command: **LT\_Loadfromquery**

Extended Commands: **RC\_RouteToViewer, PrintMessage**

---

13-Jun-2018 – Ver: 18.3.67

ETS – Updated commands: **LL\_SetAt, LL\_PushHead, LL\_PushTail, HT\_SetValue**

The commands above allow the object queue limit.

---

26-Apr-2018 – Ver: 18.2.48

ETS – New commands: **LT\_SetCellComment, LT\_GetCellComment**

---

11-Apr-2018 – Ver: 18.1.42

ETS – New command: **OnFolderChangeDo** oEventData, iFolderName, iState, iESL\_Cmd

---

20-Mar-2018 – Ver: 18.1.34

ETS – Correct memory management.

RC\_Close command has no internal delays.

Correct Abort operation.

Update GUI interface.

ESL-EDITOR – Drop files from file explorer.

SUITE – Add select/unselect all to SB jobs manager.

---

16-Jan-2018 – Ver: 18.0.7

ETS – New command prefix is added: **@AutoDeclare**. It must be before the **Let** Command.

---

01-Jan-2018 – Ver: 18.0.0

Coronys framework version 18 release.

ETS – Startup page is added.

Change GUI style from menu.

02-Nov-2017 – Ver: 17.9.142

Coronys Center – add command line flag

The command line flag dumps the license usage string into a file.

Call the Coronys center from command line like this:

```
c:\ets\coronys.exe -LU "ABC.txt"
```

-LU : license usage and the file name.

---

30-Aug-2017 – Ver: 17.9.135

Upgrade compiler to get better performance.

More stable exception handling.

Code analysis is performed.

---

20-Aug-2017 – Ver: 17.8.129

Less memory and better performance optimization.

---

13-Aug-2017 – Ver: 17.8.122

ETS – New Command: **RC\_SetTerminalState**

Remove debug messages.

Improve ETS execution speed.

Improve internal memory management.

SUITE – Fixes.

---

20-Jul-2017 – Ver: 17.5.92

ETS – **NumToAscii** command is extended. See help.

**RC\_OnConnectionLostDo** is extended.

**LT\_Create** is extended.

\*\*\* New module is added. The module implements **Performance Monitoring**.

TCP\_Server – connects to CMD.exe and redirects the I/O to there.

---

03-May-2017 – Ver: 17.3.76

ETS – filter to DB job queue. The filter shows the queue content by station.

In user parameters you can make the column with to be auto adjusted or to be fixed size. Do it from menu: File->Settings, select "General Settings" tab, and "User parameters column width".

Show DB name is status bar.

**RC\_OnConnectionLostDo** command is extended. The new parameter **iAutoRecover** if is set to one and the communication is lost, the communication is restored and **\_RetVal** holds the object name.

Suite – Check uncheck all job test cases flow. This is recursive to all jobs.

Add suite global topmost and bottommost scripts.

Show DB name is status bar.

Add station with name "**localhost**" and the job is submitted automatically to the local computer.

---

03-May-2017 – Ver: 17.3.64

ETS – Bug fix in TCL module.

---

20-Apr-2017 – Ver: 17.3.63

ETS – New Command: **RC\_OnCloseDo**

This command sets an event to the close command.

---

04-Apr-2017 – Ver: 17.3.61

ETS – RC\_OnRxDataDo is extended, now the data collecting objects; linked lists or the hash tables can be selected using their resource names.

Passing invalid parameters to windows now are handled. The Coronys packager are more stable.

---

27-Mar-2017 – Ver: 17.2.54

ETS – RC view templates are updated. Open RC viewer not duplicated.

ESL Editor – RC view templates are updated.

---

14-Mar-2017 – Ver: 17.2.52

ETS – Some Fixes.

RC\_OnRcDataDO – new record type (8) is added. This record type enables to record entire protocol packet into linked list or a hash table.

The command **StrField** is extended.

License server is part of ETS setup. License server document is updated.

---

05-Feb-2017 – Ver: 17.1.26

ESL Editor – Update templates.

---

23-Jan-2017 – Ver: 17.1.20

ETS – New command: **LT\_GetValues**

The command read the values of a given line or column into lookup table to a values list.

---

19-Jan-2017 – Ver: 17.1.18

ETS – New command: **LT\_Scan**

The command scans the lookup table to find a data into the table. The result is in a pair list that contains the "line|column,..." format.

---

17-Jan-2017 – Ver: 17.1.15

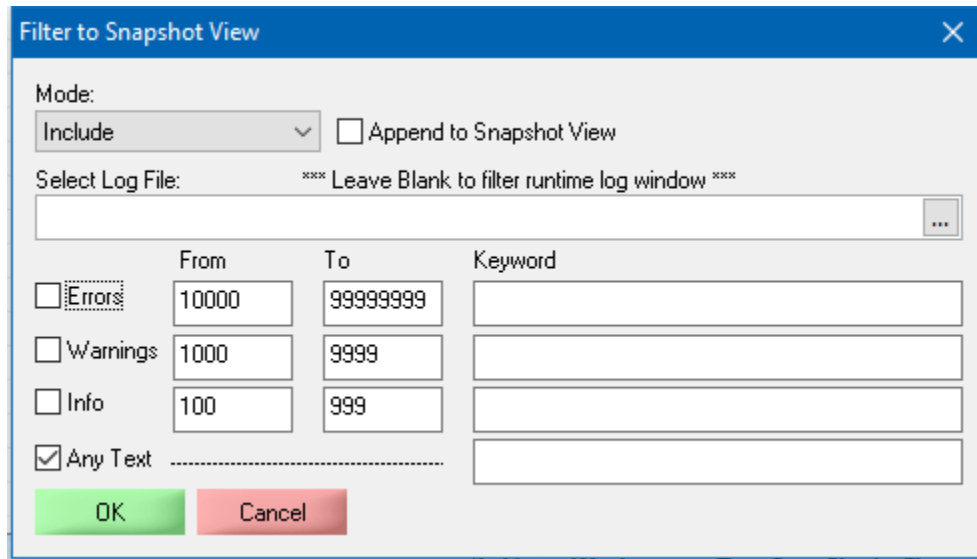
ETS – New command: **LT\_Sort**

The command sorts the lookup table to a new destination lookup table in ascending and descending order. Also you can select the data type to be sorted as strings in ASCII order or as floating numbers.

---

09-Jan-2017 – Ver: 17.1.7

ETS – Runtime log filter is updated.



**Mode** combo-box is added.

**Include** means to include only the messages that are in the filter range.

**Exclude** means to copy all the runtime log to snapshot view excluding the messages in the filter range.

You can also select an existing log file; and filter it to log snapshot while the ETS is running. Check the **Append to Snapshot view** to add more filtered information to the snapshot view. To **save** the snapshot view; select it in the front; and select save from the 'Test Manager' menu.

---

04-Jan-2017 – Ver: 17.1.4

ETS – Runtime log filter is updated. Now you can filter also using a keyword. from the "test manager" menu, you can load old log files, filter them and add them to the snapshot view.

Saving runtime log saves the current selected tab (one of: Runtime Log, Log snapshot or User messages).

---

01-Jan-2017 – Ver: 17.0.1

ETS – Ver 17 is available.

CmdToJob – new mode is added. Mode 3 is like mode 1. It also refreshes the job tree.

# Coronys Version 16 Release Notes

---

25-Dec-2016 – Ver: 16.5.189

ETS – New Commands: StrAddToList, VA\_Reset

---

20-Dec-2016 – Ver: 16.5.176

CMDtoJob.exe – New field -JRTL – job runtime log folder.

---

18-Dec-2016 – Ver: 16.5.171

- ETS – New command - TMRenameMessage oStatus, iID, iMessage.  
New frame: Task Table – create tasks from table. For each line in a table the task frame steps are executed. Each task gets the parameters from the table line.
- 

04-Dec-2016 – Ver: 16.5.160

- ETS – Submit job is changed to Job Launcher.
- 

28-Nov-2016 – Ver: 16.5.153

- ETS – New Command DB\_Reopen.
- 

06-Nov-2016 – Ver: 16.5.149

- ETS – Extend verbose debug messages.  
Math routines now are internal using @FX: prefix.  
Virtual array extended to hold string type.  
Tasks are extended to 255.  
**Old filters are removed from workspace tree.**
  - ETS\_Win – WinFind command(s) are extended. It can get empty class or caption.
  - ESL Editor – New window with current working workspace. You can open the scripts from this window.
  - Coronys Suite – Add log files to created job.
- 

04-Aug-2016 – Ver: 16.4.103

- ETS – The commands StrTrim, StrTrimLeft and StrTrimRight are extended.
- 

01-Aug-2016 – Ver: 16.4.101

- ETS\_Win - The main window is split to view spy and debug information in two separate windows.
- 

06-Jun-2016 – Ver: 16.3.81

- ETS – New ESL Command: DeclareOnceAtCaller.
  - Suite – Uses the new ESL command..
- 

04-May-2016 – Ver: 16.3.73

- ETS – Care of log files in case of multi-threading.  
**Have to regenerate your test cases.**

- Suite - Care of log files in case of multi-threading.

---

13-Apr-2016 – Ver: 16.2.71

- ETS – Export part of test step tree to be used as predefined test step wizard.

---

03-Apr-2016 – Ver: 16.2.66

- ETS – Updated ETS multi-threading.  
Show control characters in terminal and RC\_Viewer.  
Create customized module to insert to sets steps (currently manually).  
Save debugger memory and resources from ETS debug window.  
ETS settings, extend the copy or move option with do nothing.  
New ESL command: Task\_UpdateTMCounters.

---

08-Mar-2016 – Ver: 16.1.52

- ETS – Updated ETS settings.  
New chart style: StackedBar.
- Updated framework module.

---

25-Jan-2016 – Ver: 16.1.24

- ETS – Insert predefined test steps wizard.  
New commands: @task:get/set variable.  
RC\_ViewerOpen and RC\_ViewerClose.  
Move WS global parameters to Init state.
- Suite – New filter tree is added; it allows to define tree view for each user.  
Status bar shows the current view and the current submit mode.

---

03-Jan-2016 – Ver: 16.0.0

- **Version 16 is released.**

---

19-Nov-2015 – Ver: 15.13.380

- ETS New Command: ***TMExcludeMessageToRTL***
- ETS Copy or move runtime logs to DB storage (Valid for DB users).
- ETS RC\_Read command is extended.
- ESL Editor – templates are updated.

---

16-Nov-2015 – Ver: 15.13.375

- ETS Basic version is available.
- SNMP Traps are available.

---

22-Oct-2015 – Ver: 15.12.364

- Internal fixes.
- ESL Editor: stretch status bar to show command help.

---

15-Oct-2015 – Ver: 15.12.359

- ETS: Drag and drop to selected items in TC flow.  
New Command: *TMBatchGeneration*

02-Sep-2015 – Ver: 15.12.354

- ETS: Add to flow: Insert->Test Flow as Task.
- 

24-Aug-2015 – Ver: 15.12.347

- ETS `ChartFromLUT` command extended.  
Add two more buttons to DoDo keys.  
Add bitmap to ToDo keys. *Es/ToDoSet iIndex, iDescription, iESL\_Cmd, iColorCode, iBmpFileName*  
Internal debugger shows the content of lookup table, linked list and hash table.
  - Suite: Add Copy/Paste to job flow list.
- 

09-Aug-2015 – Ver: 15.12.334

- CMDtoJob: New mode = 2; this mode inserts a job to compile into DB to be generated by Suite.
    - CMDtoJob.pdf is updated.
  - Suite: Generates from DB job queue. New table named: **coronys\_jobq\_togen**.
- 

04-Aug-2015 – Ver: 15.12.333

- Coronys package ready to use with windows 10.
  - ETS\_Win: Extended to support UI commands with partial Name and Value.
    - Example: *UICommand\_RetVal, @Res:EtsWin, iCalcWin, `Get`, `Name`=Display is;Role=41|text;State=100000|focusable;ChildCount=0;`, `Index`*
- 

02-Aug-2015 – Ver: 15.11.328

- ETS:
    - Bug fixes.
    - Add Virtual Array (VA\_) commands. These commands adds the ability to create large array object (up to millions).
  - ESL Editor: Updated templates.
  - Coronys Suite: support -SUS parameter.
  - CMDtoJOB.exe: add parameters to send suspended job using -SUS
  - DB Tree Items: Add new item is faster.
- 

07-Jul-2015 – Ver: 15.11.301

- ETS: SSH module is updated.
  - ESL Editor: New templates are added. See right-click->Insert.
  - ETS\_IPC\_EX: now it is possible to hold a port while creating server. Use @30900.
  - CMDtoJOB.exe: add parameters to shared memory using -SP
- 

07-Jun-2015 – Ver: 15.10.278

- ETS: Print WS called hooks to run time log window.  
In order to enable this option, go to File->Settings. At Workspace Settings TAB put to one the "Print Called Hooks on generated TC" option.  
At General settings you can make the docked windows to be floating. (Use only for special purposes).
  - ESL Editor: the templates are updated.
- 

01-Jun-2015 – Ver: 15.10.268



- ETS: New settings option: "Use Script Cashing".  
In case you are using SSD disk drive, placing this option to zero, saves memory usage. By default this value is true. It holds the driver scripts in an ETS memory. In case of over use of memory, you can set this flag to zero. Setting this flag to zero saves memory but does a lot of disk I/O operations.

---

14-May-2015 – Ver: 15.10.262

- ETS: Folder Selection remembers the last path. Event data collection limited to 2000 events, it can be changed from settings. OnRxStringDo has new option #5, see command help.
- Suite: new variable ST\_FullJobName. Added option to select LUT from variable name.

---

16-Apr-2015 – Ver: 15.10.240

ETS: SNMP API is changed.

---

12-Apr-2015 – Ver: 15.9.233

- ETS: the command RC\_Close includes built-in delay. The delay is relative to amount of running tasks.  
Reduce internal memory usage.  
Internal enums prefixed with EN.
- ESL Editor: Export (save) script as HTML.
- Applications are compiled to use 4GB memory in 64 bit platforms.

---

31-Mar-2015 – Ver: 15.8.223

ETS: Optimize RC\_Close command.

This command works in a background. After you use this command, the ESL interpreter continues to run, while a closing process is executed in a background. It means, after this command, the used port is still open. Therefore it is recommended to place a delay after using this command. In case of multitasking, the tasks continues to work in parallel but the closing process is not. It means you have to place tasking depended delay. To do so; there is a new internal variable: @TASK:Count that it returns the amount of active tasks. The recommended relay should be like:

Delay @Task:Count + 1 \* 400.

ESL Editor: Optimize mouse operation while selecting text area.

---

25-Mar-2015 – Ver: 15.8.218

Coronys Center: Show alarm about large DB tables.

Disable or set alarm limits from ETS settings dialog.

---

23-Mar-2015 – Ver: 15.8.216

ETS: Multi-tasking PASS/FAIL counters are updated.

Requires regeneration of test cases.

You can do it from menu TestManager->TC / STC Regeneration.

---

16-Mar-2015 – Ver: 15.7.213

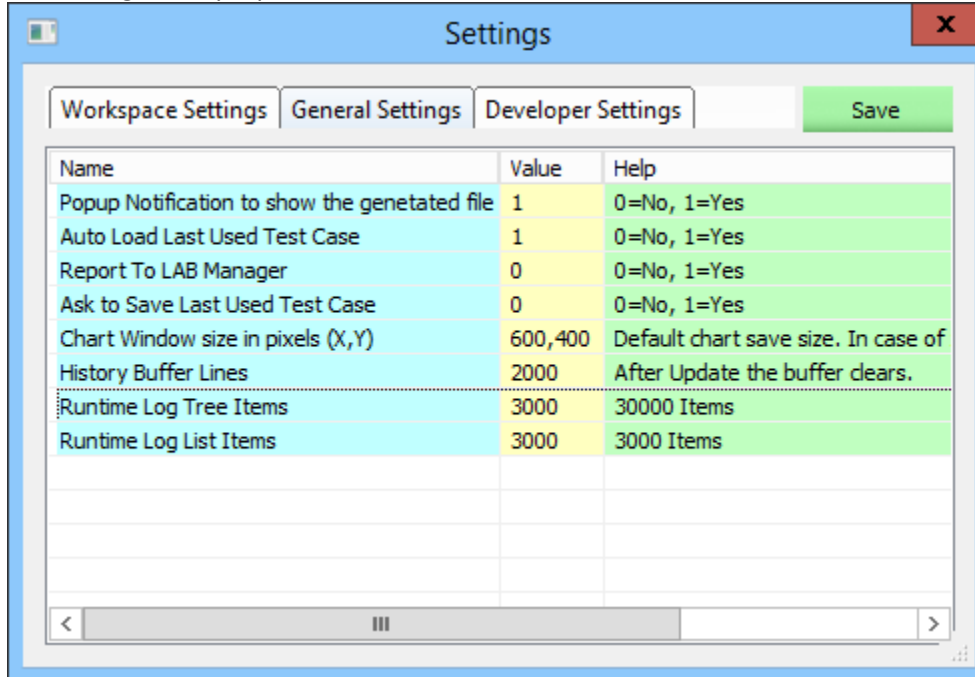
Coronys package now has 3 editions:

Demo mode: limited to: 180 variables, 3 test flows, 16 lines per flow, only main task, no charts, no jobs, no DB.

Pro. Mode: only main task, no charts, no jobs, no DB, no custom menus.

Ent. Mode: all options are available.

ETS: new generic properties. See the last two items.



Open from File->Settings...

CMDtoJob: New Flag: -JDSN, Job Destination Station Name (In Suite) in format Name#Inst

---

10-Mar-2015 – Ver: 15.6.194

ETS: Multi-tasking new synchronization commands.

Bug fix command: CastVarType for 64 bit values.

Test flow remembers the last position.

ESL editor: Saves the script at HTML format.

---

01-Mar-2015 – Ver: 15.6.183

License Server: License file name is renamed to CoronysLicense1.txt

Coronys Center: License file name is renamed to CoronysLicense1.txt.

**NOTE:** After upgrade, if you have a local license file or a server floating file, you can rename it to .TXT extension.

The license file now is **pure text file**, it should not be any problem sending the license file over email.

---

24-Feb-2015 – Ver: 15.5.166

ETS: Multi-tasking now supports inter-task shared objects.

ESL editor templates are updated.

All applications: Floating windows are disabled.

---

16-Feb-2015 – Ver: 15.4.144

ETS: Multi-tasking now supports the IPC based applications.

ETS\_Win: Works with ETS multi-tasking.

---

3-Feb-2015 – Ver: 15.3.107

ETS: New task management functions:

Task\_SyncRegister - Register current task to synchronization group.

It is recommended to set a short delay after registering to sync group. This is because we cannot be sure that all other tasks are registered before the sync point.

Task\_SyncWait - Suspend the task until current and all other tasks in a group are at the sync point.

In this synchronization mode you don't have to know the sync participants, once all registered tasks reaches the SyncWait point the tasks will continue to run at the same time.

The utilities CmdToETS.exe and CmdToNULL.exe are not supported with ETS multitasking. Please deprecate these application use.

Instead use the **RC\_CommandPromptSet** command.



25-Jan-2015 – Ver: 15.3.65

ETS: In order to use the new multi-tasking features, **you have to regenerate your test cases.**

Regenerating the test cases does not require preparing a “.BGF” file.

Select from ETS main menu: Test Manager-> TC / STC Regeneration...; and select the test cases folder, it will create the generation file and regenerate all files in the selected folder, including the sub folders as well. In case you cancel this option, the ETS asks for a BGF file like before.

Command: StrInBetween is extended.

ESL variables are extended to 65535 per task.

Tasks are extended to 63.

Suite: Manage your task jobs from suite. See menu: View->DB Jobs Queue...

DB: update #33, Delete unused tables.

---

21-Jan-2015 – Ver: 15.3.48

ETS: Prepare for multitasking/threading.

In multi- threading the internal terminal commands and window management commands must be used in the main task only.

In addition there are some particular commands that they must be locked also. See the command help.

Suite: Add Task frame for job flow.

---

06-Jan-2015 – Ver: 15.2.12

ETS: Object data is moved to shared-memory area. Now you can access the object cluster data from any ESL task.

---

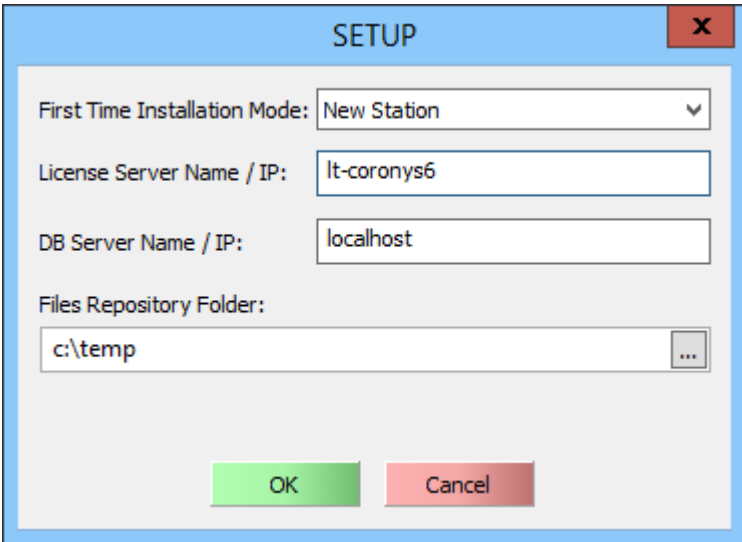
# Coronys Version 15 Release Notes

Coronys software download now has three variations:

Download for windows 7 and later.

Download for windows XP (last version for windows XP 14.16.397). XP will not get new versions.

Download last update for windows 7 and later (Usually beta versions).

Module	Changes
Coronys Setup	Coronys setup now has standard windows setup. Most of the package applications has digital signatures. Now you can uninstall from windows application manager. Warning: if you change on of the installed text file, the next setup will not update the file.
Coronys Center	In first time installation, after a few seconds the following window is open:  <p>Here you can select between working in demo mode or setup the new station information. All data is set automatically for you. You don't have to setup like before.</p>

ETS

There are new features for DB users and standalone users.

Use unified dialog for passing parameters.

New Commands:

**SysGetCurrentThreadCount** oVal

**Chart\_Command** oStatus, "SetAxisRange", iCollection, iLogXBase, iMinX, iMaxX, iLogYBase, iMinY, iMaxY

**OnWinFind** oStatus, iConnectionID, iIpcEvent, iCaption, iText, iClass, iMode

**Chart\_Command** oStatus, "SetAxisNames", iCollection, iNameX, iNameY

**DeclareResourceData** oStatus, iResourceName, iClusterName, iScope, iInfo

**SetResourceData** oStatus, iResourceName, iFieldName, iValue

@ResData:ResName:FieldName

RC\_RouteToDebugView

**WinFunction** oESID, iConnectionID, 'ES\_Create', iScriptingTimeout

**WinFunction** oStatus, iConnectionID, 'ES\_Delete', iESID

**WinFunction** oStatus, iConnectionID, 'ES\_EvaluateStatement', iESID, iStatement

**WinFunction** oStatus, iConnectionID, 'ES\_ExecuteStatement', iESID, iStatement

**WinFunction** oStatus, iConnectionID, 'ES\_Reset', iESID

**WinFunction** oStatus, iConnectionID, 'ES\_RunProcedure', iESID, iProcName, iVarList

**WinFunction** oStatus, iConnectionID, 'ES\_SetLanguage', iESID, iLanguage

**WinFunction** oStatus, iConnectionID, 'RegistryDelete', iKeyName, iValueName

**WinFunction** oStatus, iConnectionID, 'RegistryWrite', iKeyName, iValueName, iType, iValue

**WinFunction** oValue, iConnectionID, 'RegistryRead', iKeyName, iValueName, iDefault

SelectFromDBTree

LT\_Clear

New ESL commands Category: *Resource Management Commands*

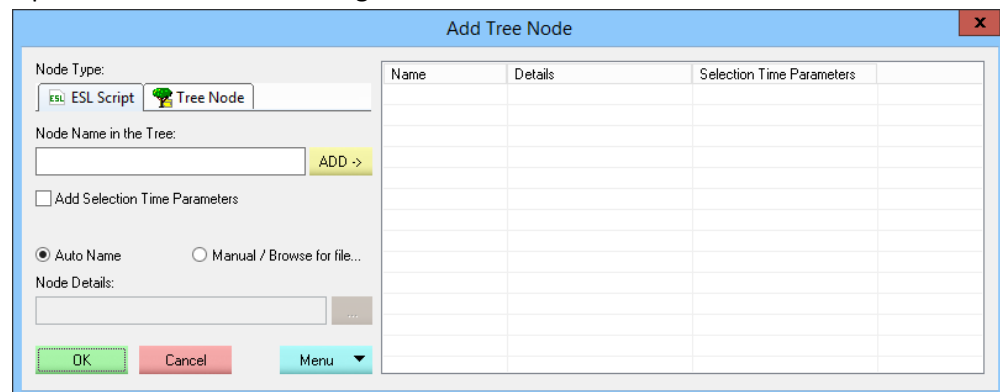
Deleted commands:

LT\_EnableEvents

LT\_OnSetCellDo

TC flow – copy and paste test steps using ^C ^V.

Updated add tree node dialog.



ESL debugger has only two windows (where 6).

The debugger remembers “debug mode”.

More detailed DB job info dialog box.

Update ## operator to support ULONGLONG type cast.

Add shared memory API for multi-tasking.  
Workspace settings moves to View menu and has new dialog.

**IAC.INI:**

Add new entry: **LIC.IP**

Use this entry to set the license server IP.

**Obsolete ESL commands are removed.**

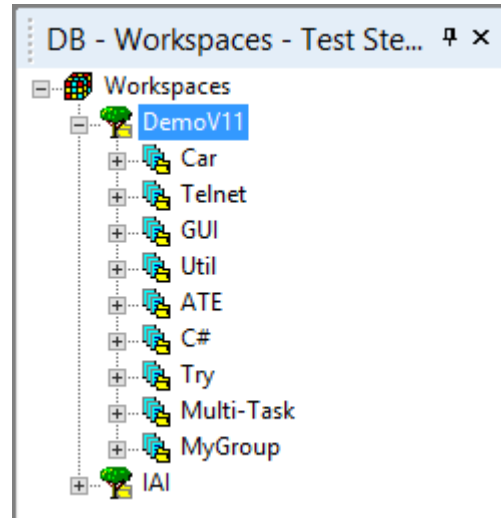
Groups in old test step trees are deprecated.

New option in workspace settings:

    general settings: "Auto Save Generated Test Case"

DB Users:

More detailed job execution window.



Import / export your workspace tree into database.

In DB tree you can manage several workspaces.

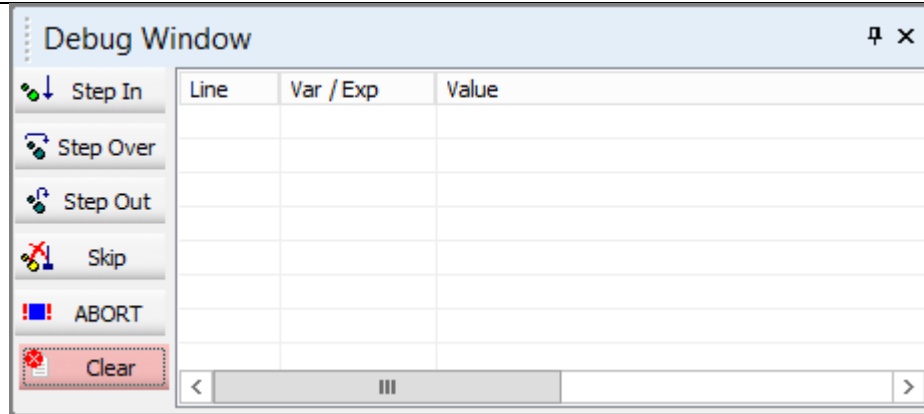
Compose test case selecting test steps from both trees.

Submit local job to run at specified time.

ESL Editor

New debug window is added:

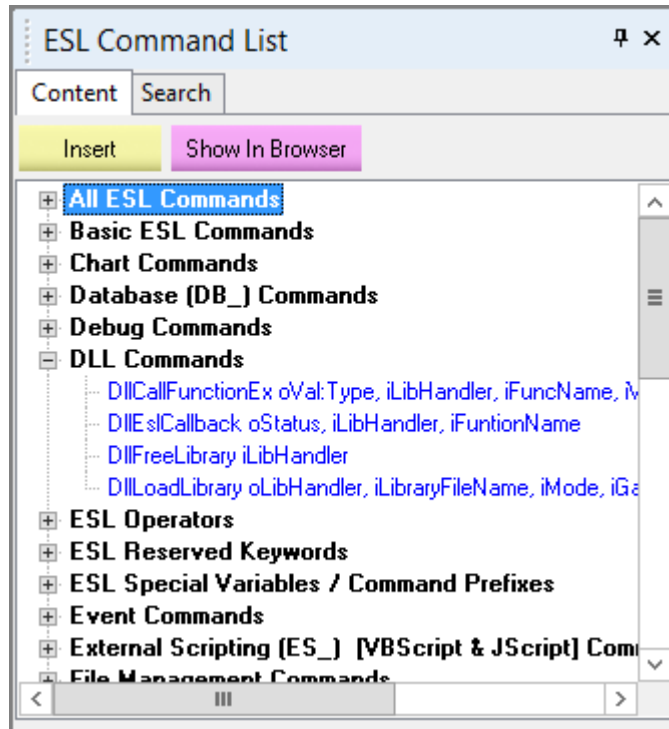




Run and debug script step by step from the editor window.



New tool bar for script debugging.



New help window with search in online help.


Coronys Suite

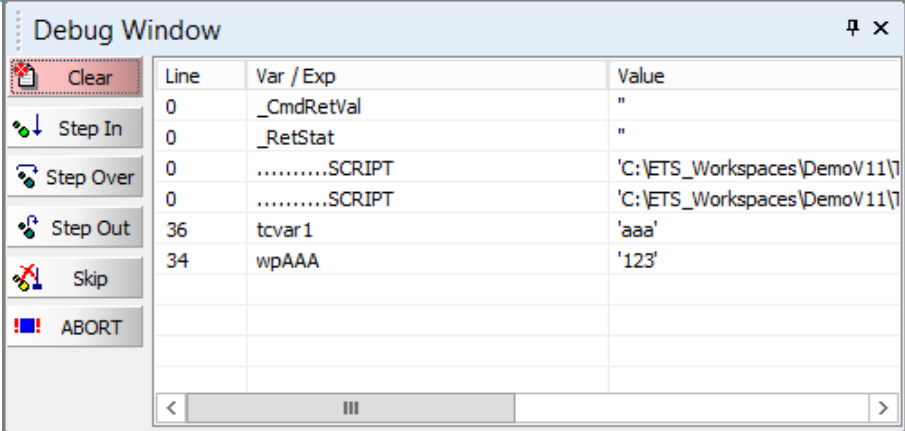
Extend CmdToJob.exe to send jobs to Suite.  
Run jobs from job group.  
Declare Pre and Post job to run multiple jobs in several machines and wait to all jobs to complete and then run the post job.  
Submit job or job group to run at specified time.  
Save tree properties to file.

Product Manager	New Module
License Manager	Allows deletion of a license.
License Viewer	Delete a license line.
ETS Win	ETS_Win has wizards that pastes code into ESL editor.
RC Viewer	Windows are open in tile mode. Better communication to ETS.
CmdToJob	Submit local job to run at specified time.

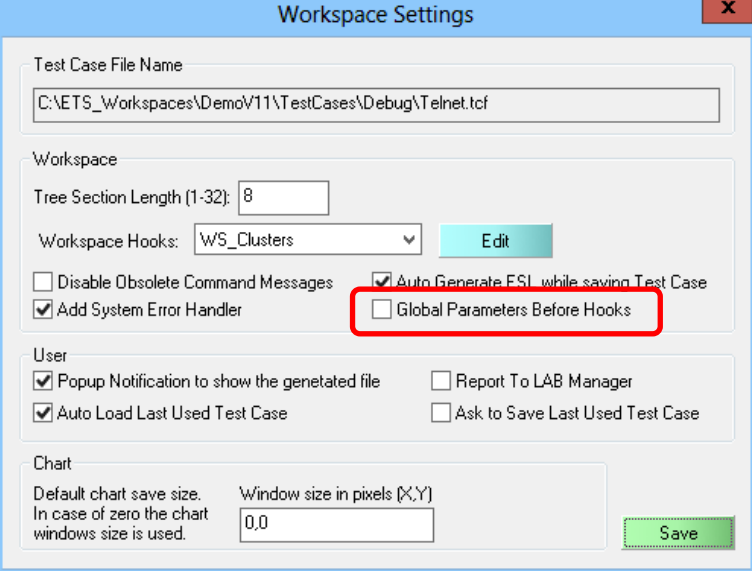
---

Date / Version	Details
<b>11 Dec 2014</b> <b>14.16.396</b>	Run jobs after specified time. Deleted commands: LT_EnableEvents, LT_OnSetCellDo New Command: LT_Clear
<b>01 Dec 2014</b> <b>14.16.368</b>	New ESL editor online help. The help is shown as tree. The help has search window to search into online help. A separate help view. You can locate this view anywhere in the editor. Coronys license monitor can remove directly a license from the license list. The deletion sets the time-left count-down to 6 minutes. If the removed application license is still alive, the timer is reset back. It requires to update the license server application. It is backward compatible with version 14. New ETS Command: SysGetCurrentThreadCount oVal
<b>24 Nov 2014</b> <b>14.15.344</b>	Updated icons. Extended DB parameters size. <b>CmdToJob.exe</b> More info in printing job info. Minor communication fixes.
<b>17 Nov 2014</b> <b>14.14.335</b>	<b>IAC.INI:</b> Add new entry: <b>LIC.IP</b> Use this entry to set the license server IP.
<b>16 Nov 2014</b> <b>14.14.334</b>	New look to icons - flat and clean design. Set splash window to Suite and ESL editor. <b>ETS:</b> Fix ESL debugger. Run button is not flicking. More detailed DB job info dialog box. Update ## operator to support ULONGLONG type cast. <b>Suite:</b> Pass parameters from CmdToJob to suite in mode=1.
<b>27 Oct 2014</b> <b>14.12.305</b>	<b>ETS:</b> Edit TC tree from ETS user. Update Online Help. Add shared memory API for multi-tasking. Add <i>Refresh</i> button to Debugger Internals window. <b>ESL Editor:</b> Update the debug window. <b>Suite:</b> Correct Pre and Post job hooks.

Date / Version	Details
	<p>Selection time parameters gets the default values if it activated from CmdToJob app. <b>CmdToJob:</b> Bug-Fix</p>
<p><b>05 Oct 2014</b> <b>14.12.278</b></p>	<p><b>ETS:</b> New ESL command to display chart in logarithmic scale: <b>Chart_Command oStatus, "SetAxisRange", iCollection, iLogXBase, iMinX, iMaxX, iLogYBase, iMinY, iMaxY</b> New ESL command to catch popup windows: <b>OnWinFind oStatus, iConnectionID, ilpcEvent, iCaption, iText, iClass, iMode</b> The debugger shows allocated string events used by resource manager. Now you can import and export your workspace tree to DB tree. It allows you to manage several workspaces in the sane database. <b>Coronys Center:</b> Coronys center has new window in a first setup to define the license manager and DB IPs. <b>Suite:</b> In suite there are two new hooks to job group. PreJob and PostJob. These hooks are run before and after the defined jobs in a group. A new variable ST_RunGroup is added, it stores the running group ID.</p>
<p><b>01 Sep 2014</b> <b>14.12.222</b></p>	<p>New tool-bar is added to ESL editor. It is used to debug the script from the editor.</p>  <p>The buttons from left to right:</p> <ol style="list-style-type: none"> <li>1. Toggle from debug (step by step) to run mode.</li> <li>2. Set / remove break point in the selected line.</li> <li>3. Open Debug Window.</li> <li>4. Set the selected line to be the next executive line (change the running sequence).</li> <li>5. Select a special variable like arrays or clusters or an expression and see the result in the status bar.</li> </ol> <p>To see the ordinary variables value just point with the mouse and a tool-tip is shown.</p>

Date / Version	Details
	 <p>Here you can step your commands and see the changed variables in this window. In ETS: The debugger window now has only two TABS. Workspace settings moves to View menu and has new dialog. RC_PopRxData extended. Step by step in user macros now shows in editor.</p>
<p><b>24 Aug 2014</b> <b>14.11.159</b></p>	<p><b>New CoronysSetup.exe Certificated application.</b></p> <p>Indentation to Test Case Flow. To re-indent the flow and show in the documentation window, click the TAB. Copy sections from test case flow using keyboard Ctrl+C and Ctrl+V. Build in support for command prompt as stream. See: <i>RC_CommandPortSet</i> And <i>CommandPortSet</i>.</p>
<p><b>06 Jul 2014</b> <b>14.09.71</b></p>	<p>Make it simpler. New ESL commands Category: <i>Resource Management Commands</i></p>
<p><b>25 Jun 2014</b> <b>14.09.54</b></p>	<p>Ordered run time log is saved as HTML. The log is opened from the run time log.</p>
<p><b>15 Jun 2014</b> <b>14.09.50</b></p>	<p>New Command: GetResourceList iLT_ID</p>
<p><b>02 Jun 2014</b></p>	<p>Use unified dialog for passing parameters. DB is changed.</p>
<p><b>06 May 2014</b> <b>14.08.37</b></p>	<p>New Commands: Chart_Command oStatus, "SetAxisNames", iCollection, iNameX, iNameY DeclareResourceData oStatus, iResourceName, iClusterName, iScope, iInfo</p>

Date / Version	Details
	SetResourceData oStatus, iResourceName, iFieldName, iValue @ResData:ResName:FieldName
29 Apr 2014 14.07.035	Open "Workspace Settings" for ETS User.
02 Apr 2014 14.07.31	Correction copy of tree elements.
25 Mar 2014 14.05.022	Dynamic event allocation. When using RC_OnRxStringDo command, the event number now can get the value of (-3). It allocates the next free event number like (-2) but the event is cleared when exiting the current scope. Set viewer default windows style to vertical.
7 Mar 2014 14.04.16	RC_RouteToFile is extended.
25 Feb 2014 14.04.12	Internal Fixes
14 Feb 2014 14.04.010	Command: RC_ConvertEscapeCharacters changed to <b>StrConvertEscapeCharacters</b> .
11 Feb 2014 14.04.008	New Command: RC_RouteToDebugView Routes the communication data to Microsoft debug viewer.
02 Feb 2014 14.04.007	RC_View Application freezing is corrected. The tree position is stored between application executions.
26 Jan 2014 14.03.006	In UDP type connection: the function IpcGetServerName () return the allocated IP instead the computer name.
20 Jan 2014 14.02.005	Correct generation jobs from group. The group has new field: Group ID. There are two new variable: <b>ST_JobGroupID</b> -> holds the Group ID, the database new field <i>logGroupID</i> in table <i>coronys_Log_TC</i> holds this value. <b>ST_GroupCounter</b> -> holds the TC in a group. The last running TC has the value zero.
20 Jan 2014 14.02.003	New Module: Coronys Power Shell. In ETS folder find SetupCoronysPS.msi. Use the following script to access from ETS: Declare Status, ConnectionID, Answer OpenConnection ConnectionID, @ENV:COMPUTERNAME \$ "@30670" AskMailslotMessage Status, Answer, ConnectionID, 10001, "dir", 2000 Print Answer CloseConnection ConnectionID
19 Jan 2014 14.02.003	Lookup table size extended to 2147483648 X 2147483648. It is only in the paper, as usual it is limited to your computer memory size.
07 Jan 2014 14.01.002	New flag in workspace settings.

Date / Version	Details
	 <p>Now you have two options to where the global parameters are generated: Before the pretest hooks or after the pretest hooks.</p>
<p><b>07 Jan 2014</b> <b>14.01.002</b></p>	<p>New Commands:</p> <p><a href="#">WinFunction</a> <i>oESID, iConnectionID, `ES_Create`, iScriptingTimeout</i></p> <p><a href="#">WinFunction</a> <i>oStatus, iConnectionID, `ES_Delete`, iESID</i></p> <p><a href="#">WinFunction</a> <i>oStatus, iConnectionID, `ES_EvaluateStatement`, iESID, iStatement</i></p> <p><a href="#">WinFunction</a> <i>oStatus, iConnectionID, `ES_ExecuteStatement`, iESID, iStatement</i></p> <p><a href="#">WinFunction</a> <i>oStatus, iConnectionID, `ES_Reset`, iESID</i></p> <p><a href="#">WinFunction</a> <i>oStatus, iConnectionID, `ES_RunProcedure`, iESID, iProcName, iVarList</i></p> <p><a href="#">WinFunction</a> <i>oStatus, iConnectionID, `ES_SetLanguage`, iESID, iLanguage</i></p> <p><a href="#">WinFunction</a> <i>oStatus, iConnectionID, `RegistryDelete`, iKeyName, iValueName</i></p> <p><a href="#">WinFunction</a> <i>oStatus, iConnectionID, `RegistryWrite`, iKeyName, iValueName, iType, iValue</i></p> <p><a href="#">WinFunction</a> <i>oValue, iConnectionID, `RegistryRead`, iKeyName, iValueName, iDefault</i></p>
<p>29 Dec 2013 <b>14.00.00</b></p>	<p>New ESL Command: SelectFromDBTree</p> <p>Remove some Obsolete commands</p> <p>Extend command: InputString</p> <p>ETS_Win has wizards that pastes code into ESL editor.</p> <p><b>Requires license manager version 14.</b></p>